



# THE COMPLETE TABLETOP

Providing full range product lines and collections that deliver a WOW experience. In-stock and ready to ship.

20 YEAR ANNIVERSARY  
**F O H**  
FRONT OF THE HOUSE®

# WHY FOH®



## designs & manufactures 1000's of products

Restaurants and chefs worldwide turn to Front of the House® for our in-demand designs and commercial-grade durability that are key ingredients in our recipe for designing and manufacturing smart, savvy, tabletop and serving essentials.



## in-stock and ready to ship

23,000 sq. ft. USA headquarters & 175+ Team Members Worldwide. Distribution Centers in Florida, California & Germany with over 130,000 sq. ft. All items stocked & ready to ship! 3 overseas R&D offices with in-house product development, engineering, logistics, and QC teams.



## product confidence guarantee

Our Product Confidence Pledge lets you know our commitment to quality is top notch. If you experience a problem with one of our items under normal service conditions and have used the product in accordance with our use and maintenance instructions, please contact your local sales representative or FOH® Customer Service Specialist.



## proudly diverse

FOH® is sustained by the diversity of our incredible team. As such, we provide equal employment opportunities (EEO) to all Team Members without regard to race, color, creed, religion, gender, sexual orientation, gender identity or expression, national origin, ancestry, citizenship status, age, or disability.



## from our hearts

FOH®, and brands Front of the House® & room360° by FOH®, firmly believe it's our foundational responsibility as a business, community, and family to give back and to be agents for change by supporting organizations and initiatives committed to making a difference in our world.



## great place to work

FOH® is proud to be certified a Great Place to Work since 2016 and live our corporate values, "The Way We Are", in everything we do.

#8 Best Workplace in Manufacturing  
#15 Best Workplace for Women  
#86 Best Workplace Overall across the U.S.  
Fortune Best Workplaces in Manufacturing

# CONTENTS

OWEN 4

PARKER 5

GRANT 6

LUCA 7

LIAM 8

CAMERON 9

JASPER 10

SERVING UTENSILS 11





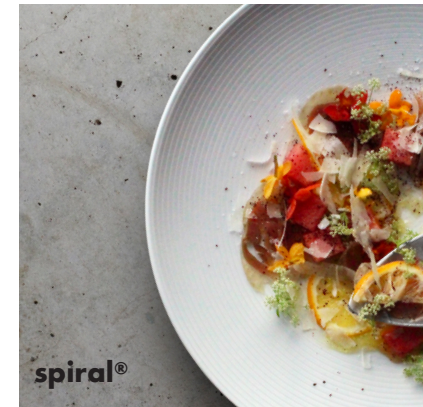
# OWEN

Owen is a fusion of impactful and modern elements that exemplify one of a kind design. It's all in the details with Owen. It's textured handle channels sophisticated design and conceals the appearance of fingerprints in Mirrored, Matte Black, and Matte Brass.



Designed with 18/10 stainless steel.

## PAIRS WITH





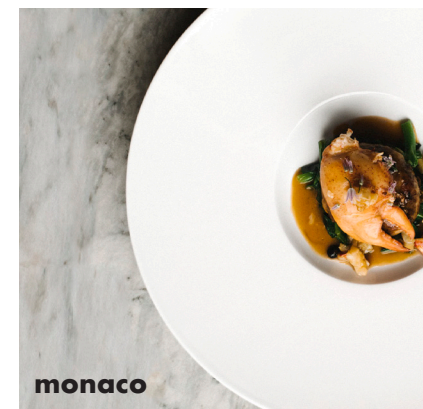
# PARKER

Parker's impactful aesthetic flawlessly harmonizes great durability and design for everyday use. Forged from the highest quality stainless steel, its blunt edges and sleek body look great in Mirrored and Matte Brass.



Designed with 18/10 stainless steel.

## PAIRS WITH





# GRANT

A flatware masterpiece, the **Grant** collection is two toned with a Mirrored top and Brushed bottom that disguises any appearance of fingerprints. With rounded edges for an easy grip and no messy fingerprints, Grant is the ultimate multi-tasker at your table.



Designed with 18/10 stainless steel.

## PAIRS WITH





# LUCA

Bite into luxury with the refined sense of dining only **Luca** can exude. It's bold and durable craftsmanship make it easy to bond with Luca's PVD matte finish. Enjoy how the round handle sits in your hand and relish every bite with the Luca collection in Brushed and Matte Brass finish.



Designed with 18/10 stainless steel.

## PAIRS WITH





# LIAM

Durable by nature and discrete by design, **Liam** has a minimalist approach with maximum functionality. The intricate details of its modern sculpted shape and elongated handle prove the perfect match for any meal.



Designed with 18/10 stainless steel.

## PAIRS WITH







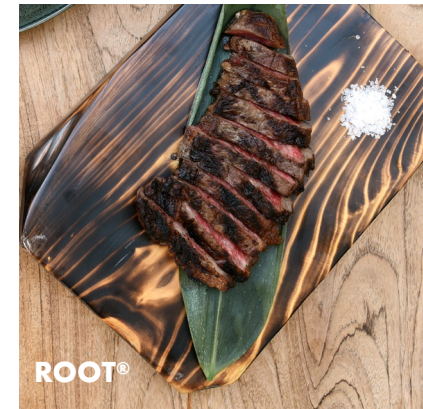
# CAMERON

Cameron puts all the focus on function. With an updated baguette handle, you'll feel the balance in this durable Americana design. It's versatile Mirror and Antique finishes deliver a classic design you won't be able to resist.



Designed with 18/10 stainless steel.

## PAIRS WITH





# JASPER

With a sleek and slender form, our A-list **Jasper** collection is an impressive must-have. It's crisp edges and pinched bottom handle are on point. This well-balanced line remains true to its contemporary look and feel with a smooth Brushed finish.



Designed with 18/10 stainless steel.

## PAIRS WITH





# SERVING UTENSILS

Create a seamless dining experience with our ergonomic serving pieces. Our highly anticipated utensil collection is intentionally designed with a brushed finish to avoid messy fingerprints and ergonomic handles that are made to rest perfectly on the edge of a platter or bowl.



Designed with 18/10 stainless steel.

## PAIRS WITH





305.757.7940  
info@foh.cc  
frontofthehouse.com

## share the love!

Plate, post, & tag us @fohinc  
#PerfectlyPlated #FOHinAction

